

## CARON® CROCHET RIPPLE RIDGES BLANKET



### MATERIALS

**Caron® Jumbo Ombre™** (12 oz/340 g; 595 yds /544 m)  
Carrara Marble (19001) **5 balls**

Size U.S. H/8 (5 mm) crochet hook **or size needed to obtain gauge.**



CROCHET | SKILL LEVEL: **EASY**

### ABBREVIATIONS

**Approx** = Approximately

**Beg** = Begin(ing)

**Ch** = Chain(s)

**Dc** = Double crochet

**Dtr** = (Yoh) 3 times and draw up a loop in indicated sp. (Yoh and draw through 2 loops on hook) 4 times

**Pat** = Pattern

**Rep** = Repeat

**RS** = Right side

**Sc** = Single crochet

**Scfp** = Draw up a loop around post of next stitch at front of work, inserting hook from right to left. Yoh and draw through 2 loops on hook

**Sl st** = Slip stitch

**Sp(s)** = Space(s)

**St(s)** = Stitch(es)

**Yoh** = Yarn over hook

### MEASUREMENTS

Approx 50" x 58" [127 x 147.5 cm].

### GAUGE

12 sc and 13 rows = 4" [10 cm].

19 sts and 8 rows = 4" [10 cm] in pattern.

### INSTRUCTIONS

Ch 240 (multiple of 19 ch + 12), marking every 50th ch for easier counting. See diagram on page 2.

**1st row:** (RS). 1 dc in 4th ch from hook (counts as 2 dc). 1 dc in each of next 3 ch. \*5 dc in next ch. 1 dc

in next ch. (Skip next ch. 1 dc in next ch) 8 times. 5 dc in next ch. Rep from \* to last 5 ch. 1 dc in each of last 5 ch. Turn.

**2nd row:** Ch 1. 1 sc in first dc. 1 scfp around each dc to last dc. 1 sc in last dc. Turn.

**3rd row:** Ch 3 (counts as dc). 1 dc in each of next 4 sts. \*5 dc in next st. 1 dc in next st. (Skip next st. 1 dc in next st) 8 times. 5 dc in next st. Rep from \* to last 5 sts. 1 dc in each of last 5 sts. Turn.

**4th row:** As 2nd row.

**5th row:** Ch 5 (counts as dtr). 1 dtr in each of next 4 sts. \*[(1 dtr. Ch 1)

## CARON® CROCHET RIPPLE RIDGES BLANKET

3 times. 1 dtr] all in next st. (Skip next 2 sts. 1 dtr in next st) 5 times. Skip next 2 sts. [(1 dtr. Ch 1) 3 times. 1 dtr] all in next st. Rep from \* to last 5 sts. 1 dtr in each of last 5 sts. Turn.

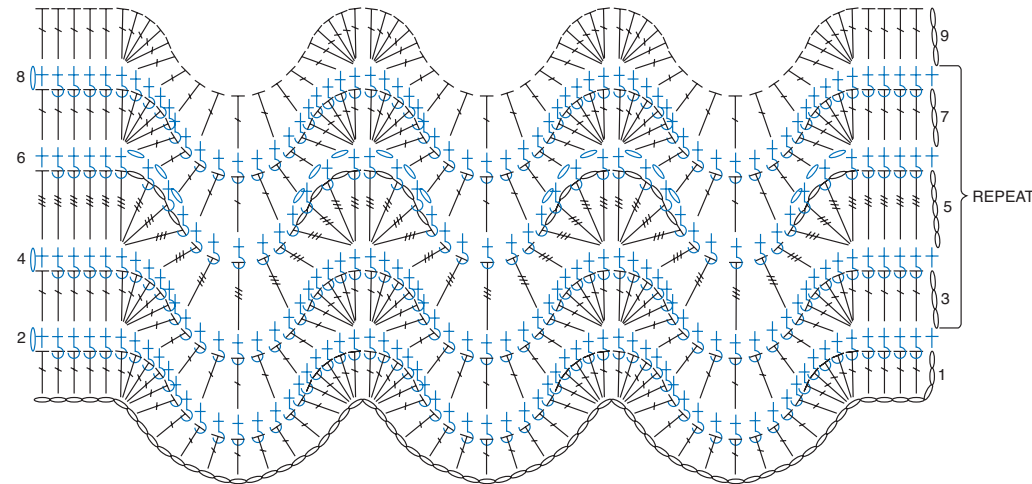
**6th row:** Ch 1. 1 sc in first dtr. 1 scfp around each of next 4 dtr. \*(1 scfp around next dtr. Ch 1) 3 times. 1 scfp around each of next 6 dtr. (1 scfp around next dtr. Ch 1) 3 times. 1 scfp around next dtr. Rep from \* to last 5 dtr. 1 scfp around each of last 5 dtr. Turn.

**7th row:** Ch 3 (counts as dc). 1 dc in each of next 4 sts. \*5 dc in next st. (1 dc in next ch-1 sp. Skip next st) 3 times. (1 dc in next st. Skip next st) twice. 1 dc in next ch-1 sp. 5 dc in next st. Rep from \* to last 5 sts. 1 dc in each of last 5 sts. Turn.

**8th row:** Ch 1. 1 sc in first dc. 1 scfp around each dc to last dc. 1 sc in last dc. Turn.

Rep 3rd to 8th rows for pat until work from beg measures approx 58" [147.5 cm], ending on a 4th row.

Fasten off.



REDUCED SAMPLE OF PATTERN

### STITCH KEY

- = chain (ch)
- ⊕ = single crochet (sc)
- ⌞ = double crochet (dc)
- ⌞⌞ = double treble crochet (dtr)
- ⊕ = front post single crochet (scfp)

